

Nelson County 4-H Fair Exhibits

2017

General 4-H Rules & Regulations

1. Open to all Nelson County 4-H'ers.
2. One entry per class per exhibitor. (You can enter an item in every 4-H project listed.) (some additional restrictions may apply)
3. Danish System used in judging (Blue, Red and White). Awards based on quality of work.
4. Exhibits must be from projects completed or now in the process of completion since Sept. 1, 2016.
5. Exhibits accepted from 9:00 a.m. - 11:00 a.m. on Monday, July 17, 2017 at Samuels Hall. Entries shall be removed between 1:30 p.m. - 2:30 p.m. on Sunday, July 23, 2017.
6. Premiums will be awarded as follows:

Champion Purple	Blue	Red	White
\$2.00 plus	\$3.00	\$2.00	\$1.00

Every participant will receive a Blue, Red or White ribbon in the category entered. Champions in each category will receive a purple ribbon in addition to the blue or red or white ribbon.

7. Exhibits will be registered by 4-H Staff, 4-H Leaders, Adult 4-H Council and Teen Council.
8. Projects will be judged beginning at 1:00 p.m., July 17, 2017.
9. A Cloverbud division is open to 4-H youth under 9 years of age. Call the Extension Office for specifications.
10. **If a project references a specific 4-H project for more details, please contact the Nelson County Cooperative Extension Office at 502-348-9204**

DIVISION 6015 - 4-H HORTICULTURE & PLANT SCIENCE

4-H Horticulture & Plant Science exhibits will be divided into the following classes:

- 561 Environmental Awareness (Such as but not limited to:)
 - A. Tree planting on city property, roadways, parks, etc.
 - B. Home landscaping
 - C. Composting
- 562 Production and Marketing (such as but not limited to:)
 - A. Vegetable garden planted for home and/or market use.
 - B. The planting, production, or management of fruit plantings.
 - C. The planting, production, or management of trees, shrubs, greenhouse crops or garden perennials.
- 563 Experimental Horticulture (such as, but not limited to:)
 - A. "Science Fair" type of exhibit involving experimental work with plants
 - B. Comparison of different varieties of vegetables or annual flowers
 - C. Comparison of mulching or other cultural practices
- 564 Horticultural Project Exhibits (such as, but not limited to:)
 - A. How to propagate plants
 - B. How to force spring bulbs
 - C. How to start seeds
 - D. How to graft cacti
 - E. How to dry herbs

Plant Display: Youth should NOT use garden soil in containers. Use well-drained, disease-free potting soil for all containers.

- 565 Terrariums
- 566 Dish gardens (desert or tropical)
- 567 Vegetable container gardens (grown in container - not dug out of the garden)
- 568 Annual container gardens (non vegetable)
- 569 House plants
- 570 Hanging baskets
- 571 Herb Container Garden
- 572 Window Box Display
- 573 Upcycle Container Garden (Previously used container recycled, example, wood pallet garden)

Garden and/or Orchard Displays

- 574 The exhibitor may exhibit as many different fruits and/or vegetables from their garden as desired. Any size or type (minimum of five types) of produce may be displayed in the 2'x3' area provided for each exhibit. The exhibit must be in a display container (box or basket) which can be easily moved. Vegetables will not be returned to exhibitor. They will be judged as follows:

4-H'ers may also exhibit plates of vegetables. A white paper plate for vegetables must be supplied by the exhibitor. These vegetables will not be returned to the exhibitor. Classes of vegetables will be limited to:

- 575 Tomato (5 per plate) Must be ripe (red or yellow color only) cherry type
- 576 Tomato (5 per plate) beef steak
- 577 Tomato (5 per plate) heirloom
- 578 Peppers - hot (5 per plate)
- 579 Peppers - bell (5 per plate)
- 580 Peppers - sweet (5 per plate)
- 581 Cucumbers - slicing (5 per plate),
- 581 Cucumbers - pickling (5 per plate)
- 583 Beans, snap or lima (12 per plate)
- 584 Corn, sweet (in the husk with silks) (5 ears per plate)
- 585 Cantaloupe (1 whole), halved

The largest vegetable may not be the highest quality, nevertheless, it is unique. The largest entry in each of the following classes will receive a class champion ribbon.

- 586 Largest Tomato (by weight) Must be ripe (red or yellow color only)

- 588 Largest Pumpkin (by weight)
- 589 Largest Watermelon (by weight)

DIVISION 6017 - 4-H TOBACCO EXHIBIT

4-H Tobacco exhibits will be divided into the following classes:

TOBACCO DIVISIONS AND CLASSES

Burley Division – Stripped

All 4-H Burley should be entered as Division 2101.

Class No.

- 5 Flying
- 6 Lug
- 7 Leaf
- 8 Tip

Burley - Best Crop

Class No.

- 15 Best Crop, 4-H, 4 grades

Dark Tobacco

All 4-H Dark Tobacco should be entered as Division 2102.

Class No.

- 26 4-H Best Crop
(2 hands – 20 leaves each grade)

4-H Class Green Dark Tobacco (By Sticks):

Class No.

- 31 Dark

Growing Dark Tobacco Plant

Class No.

- 33 Best potted growing plant of Dark Tobacco, any type

4-H Class Green Tobacco (by sticks):

Class No.

- 36 Burley

Class No.

- 39 Best potted growing plant of Burley Tobacco

DIVISION 6018 - 4-H CROPS PROJECT

4-H Crops Project exhibits will be divided into the following classes:

LEGUME HAY:

- 600 Alfalfa hay, ½ bale (no full bales accepted) from the current year's project crop, neatly tied and labeled.
- 601 Red clover hay, ½ bale (no full bales accepted) from the current year's project crop, neatly tied and labeled.

GRASS HAY:

- 602 Timothy Hay, ½ bale from this current year's project crop, neatly tied and labeled. Place hay in a double strength plastic bag.
- 603 Other Grass Hay, ½ bale from the current year's project crop, neatly tied and labeled. Place hay in a double strength plastic bag.

MIXED HAY:

- 604 Mixed Hay, ½ bale from the current year's project crop, neatly tied and labeled.

YELLOW CORN:

- 605 Yellow-ear, from the previous year's crop, 8 ears shucked, and labeled with variety and yield.
- 606 Yellow-ear, from the current year's crop, 8 ears shucked, and labeled with variety and yield.
- 607 Yellow-shelled, from the previous year's crop, 0.5 gallon in a container, and labeled to show variety and yield.

WHITE CORN:

- 608 White-ear, from the previous year's crop, 8 ears shucked, and labeled with variety and yield.
- 609 White-ear, from the current year's crop, 8 ears shucked, and labeled with variety and yield.
- 610 White-shelled, from the previous year's crop, 0.5 gallon in a container, and labeled to show variety and yield.

POPCORN:

- 611 White Popcorn-ear, from the previous year's crop, 8 ears shucked, and labeled with variety and yield.
- 612 Red Popcorn-ear, from the previous year's crop, 8 ears shucked, and labeled with variety and yield.
- 613 Yellow Popcorn-ear, from the previous year's crop, 8 ears shucked, and labeled with variety and yield.

FIELD SOYBEANS (Oil):

- 614 Soybeans from the current year's crop, three stalks tied together below leaves, with roots intact, but free of soil, and labeled to show variety.
- 615 Soybeans from the previous year's crop. 1-gallon zip lock bag, and labeled to show variety and yield.

GRAIN SORGHUM (Milo):

- 617 Grain Sorghum from the current year's crop, three stalks tied together below leaves, with roots in tact, but free of soil, and labeled to show variety.
- 618 Grain Sorghum from the previous year's crop, 1 gallon zip lock bag, and labeled to show variety and yield.

SWEET SORGHUM

- 619 Sweet sorghum from the current year's crop, three stalks tied together below leaves, with roots intact, but free of soil, and labeled to show variety.

WHEAT (Soft, Red, Winter)

- 620 Wheat from the current year's crop, 0.5 gallon in a container, and labeled to show variety and yield.
- 621 Barley from the current year's crop, 0.5 gallon in a container, and labeled to show variety and yield.

DIVISION 6021 - 4-H ELECTRIC

4-H Electric exhibits will be divided into the following classes:

MAGIC OF ELECTRICITY (4HCCS BU-06848) (All exhibits must be DC powered).

- 645 Battery powered series and parallel circuits (Circuits must include both series and parallel, a simple switch and can be no more than 9 volts).
- 646 Homemade Galvanometer (Must be able to detect the presence of an electrical current)
- 647 Electromagnetic Circuits (Must be a working electromagnet with a simple switch and can be no more than 9 volts).
- 648 Simple homemade DC motor (Rotor must turn under it's own power).

INVESTIGATING ELECTRICITY (4HCCS BU-06849) (all exhibits must be DC powered)

- 649 Battery powered series or parallel circuit (Circuit may be either series or parallel, must contain either a momentary and/or three way switch, a circuit diagram with explanation and can be no more than 9 volts).
- 650 Original design soldered circuit project (Circuit must contain an on/off switch, a motion or tilt activated switch, a light and sound producing device and must be powered by 9 volts. All connections in the circuit must soldered and a circuit diagram with explanation must be included).

WIRED FOR POWER (4HCCS BU-06850) (all exhibits must be AC powered and be able to be safely connected and disconnected from a standard 120 volt duplex outlet).

- 651 Display of wire sizes and types with description and example of usage (display must contain at least 12 different examples)
- 652 Simple household or farm use circuit (Circuit must contain one single pole switch controlling one electrical load device. Circuit should be mounted on a sturdy mounting surface and free standing. Wiring should be done with Romex NM-B 12 gauge wire and clamped or stapled appropriately. A circuit diagram with explanation must be included)
- 653 Complex household or farm use circuit (Circuit must contain at least two three-way switches, and may also contain a four-way switch, controlling one electrical load device. The circuit must also contain a working duplex electrical outlet. Circuit should be mounted on a sturdy mounting surface and free standing. Wiring should be done with Romex NM-B 12 gauge wire and clamped or stapled appropriately. A circuit diagram with explanation must be included)
- 654 Table, desk, vanity or floor lamp (any purpose – original design only)

ENTERING ELECTRONICS (4HCCS BU-06851) (exhibits may be either DC or AC powered. AC powered exhibits must be able to be safely connected and disconnected from a standard 120 volt duplex outlet).

- 655 Basic electronic circuits without solid-state components (from project book).
- 656 Basic electronic circuits with solid-state components (from kit).
- 657 Basic electronic circuits with solid-state components (original circuit design, must include circuit diagram and explanation).

GREEN ENERGY

- 658 Wind or solar powered energy project (from kit).
- 659 Wind or solar powered energy project (original design).

DIVISION 6025 - 4-H WOOD SCIENCE

4-H Wood Science exhibits will be divided into the following classes:

- 674 Level 1, **made from a kit**. Simple items which have pre-cut and pre-drilled parts and youth demonstrate knowledge of assembly, selection and use of fasteners (nails, screws and/or glue), sanding techniques, and appropriate finishes. (Examples could include but not limited to: small bird house, non-hopper bird feeder, etc.) Item must demonstrate skill with fasteners, sanding and appropriate finish (no puzzles).
- 675 Level 1, **NOT from a kit**. Simple constructed wood item showing knowledge of hand tools, wood selection, cutting, drilling, usage of fasteners (nails, screws and/or glue), sanding techniques, and appropriate finishes. (Examples could include but not limited to: napkin holder, letter holder, simple picture frame, wire wiggly, towel holder, serving tray, jewelry box, small flag holder, 4-H book ends, airplane, hurricane lamp, trivet (pot holder), etc.)
- 676 Level 2, **made from a kit**. More elaborate items which require proper cutting, drilling and youth demonstrate knowledge of selection and skill in use of fasteners (nails, screws and/or glue), sanding techniques, and appropriate finishes. (Examples could include but not limited to: jewelry box, tool tray, large bird house, pine wood cars, etc.) Item must demonstrate skill with fasteners, sanding and appropriate finish (no puzzles).
- 677 Level 2, **NOT from a kit**. More elaborate items that demonstrate mastered skills with hand tools, basic knowledge of power hand tools, fastening options, appropriate surface preparations, and finish applications. (Examples could include but not limited to: puzzle, foot stool, revolving tie rack, 4-H key holder, cutting board, book rack, serving dish shelf, sawhorse, hopper type bird feeder, etc.)
- 678 Level 3, **NOT from a kit**. Items showing a more advanced knowledge of power tools, expertise in cutting, fitting, surface preparation, attention to fastening details, and finish application, (Examples could include but not limited to: a multi-purpose box, corner shelf, book shelf or laminated wood projects, garden bench, planting box, nail and tool box, shop tool rack & shelf, etc.) Original designs are welcomed. This exhibit is to be made up of two parts: 1) the **item** and 2) a **folder containing photographic documentation** of the steps taken in order to complete this exhibit.
- 679 Level 4, **NO kits**. Exhibits with a "furniture" quality finish, showing an understanding of all woodworking techniques learned in previous levels. Items must show a mastery of joint construction and use of special woods, and finishes. (Examples could include but not limited to: checker boardroom divider, coffee table, end table, chest of drawers, gun rack or cabinet, etc.) Original designs are welcomed. This exhibit is to be made up of two parts: 1) the **item** and 2) a **folder containing photographic documentation** of the steps taken in order to complete this exhibit.
- 680 Level 4, **NO kits**. Exhibits do not require a fine finish (painted finish allowable) because of practical use. Items demonstrate knowledge of all woodworking techniques learned in previous levels. Items must show a mastery of cutting, drilling, joint construction, use of special woods, and appropriate finishes. (Examples could include but not limited to: porch swing, chaise lounge, picnic table, lawn chair, large planters, etc.) This exhibit is to be made up of two parts: 1) the **item** and 2) a **folder containing photographic documentation** of the steps taken in order to complete this exhibit.

**DIVISION 6026 – ENTOMOLOGY
ECOLOGY, NATURAL RESOURCES**

4-H Entomology exhibits will be divided into the following classes:

- 687A First year project (1 or 2 boxes with minimum of 25 insects, maximum 50 insects, from at least four orders. Identification beyond order not necessary. All specimens must have date and locality label.)
- 687B First year project (minimum of 25 insect photographs, maximum 50 photographs, from at least four orders. Identification beyond order not necessary. All photographs must have notation field.)
- 688 Second year project (1 or 2 boxes with minimum of eight orders and not less than 50 insects, nor more than 100 insects.) Half of the insects should be identified with a common name.
- 689 Third year project (2 boxes with a minimum of 10 orders and 100 insects, a maximum of 150 insects.)
- 690 Fourth year project (2 boxes with minimum of 12 orders and 150 insects, no maximum) A third box with an example of insect damage, the stage of the insect causing the damage and any other stage of the insect that helps identify the problem. Include information in the display that tells how the insect is controlled. Life cycle of two insects may be displayed if desired.
- 691 Fifth year project (may be repeated for successive years of eligibility but must be a different exhibit. No exhibit that has been judged in any previous State Fair may be entered.) Any type of display that pertains to experiences beyond those of previous projects. Special collections of native and/or exotic butterflies, beetles to some other insect order; a study in depth of one insect or small group of insects: a display of insect camouflage: a display of plastic embedded insects: a collection of insect larvae and nymphs are examples. Charts, photographs, models or any other visual aids may be used. 4-H'ers are encouraged to write a short (1 or 2 paragraphs) statement developing the theme of their fifth year display.

Specifications for display boxes:

- a. Homemade or purchased wooden exhibit boxes may be used instead. They must be approximately 18" x 24" and not more than 3 1/2" thick with Plexiglas or glass covers and cellotex pinning bottoms (or plastazote or polyethylene pinning bottoms available from entomology supply stores such as Bioquip.com). Boxes must be easily opened (for instance; if a screw is used to secure Plexiglas tops, use a thumbscrew fastener instead of a fastener that requires a tool).
- b. Specimens are to be arranged so the box can be exhibited horizontally. 4-H'ers may attach wires to the back of wooden boxes to help make them easier to display.
- c. Identification labels available from your County Extension Office must be used, or custom labels may be printed if they conform exactly to the font, font size, and font color of the official labels. Labels should be printed onto white cardstock. The exhibit identification card should be placed on the front of the box (each box). Instructions for pinning and labeling are included in your project literature.
- d. One half of the specimens may be from the previous year's collection or from anywhere in the United States; one half or more must be Kentucky insects collected since the last Kentucky State Fair.
- e. For the first through fifth year projects, a display collection catalog must be in an envelope attached to the back of the display box. Envelopes should be attached to permit their being opened easily to remove catalogue from them without moving the exhibit.
- f. Most specimens in the display cases should be pinned, and the use of vials is discouraged. If vials are used, they may account for no more than 2% of a collection. Vials must be securely wired or pinned to the pinning bottoms.
- g. The inclusion of non-insect specimens (spiders, e.g.) is encouraged, but because this is primarily an insect collection, and because non-insects do not preserve well on insect pins, points will be deducted if there are more than one specimen from each non-insect class.

Specifications for insect photography exhibits:

- a. Images will be submitted on a USB memory device (such as a "thumb drive") with no other data except for the images and folders. The USB device must be identified externally with a tag or label, showing "4-Her's last name-County-Lot Number-Class Number-Entry Number." The single root folder will be labeled with the same information. Images will be contained inside this folder. Example folder name: Doe-Fayette-6026-687a-24531
- b. Each image will be .jpg format, 1920X1080 pixels. Vertical or horizontal black bars may be present to allow for cropped images.
- c. Each image will have a filename that matches the following: "lastname-county-#.jpg," where "#" indicates the number of the image inside the folder. Example filename: Doe-Fayette-1.jpg

- d. Each image will include a 200X200 pixel, white notation box with important information about the photo. This notation field may be placed anywhere inside the image, including inside black bars (if present). Fonts may vary based on the 4-Her's software, but we recommend Ariel, 10pt, black, non-bold. The notation field will include the following information, with one space between each line:
 [4-Her's Name, County, Lot Number, Class Number, Entry Number]
 [Date of original photograph]/[Location of original photograph. Location may be in the form of a street/city/zip code address or GPS coordinates.]
 [Brand and type of camera or camera phone]
 [Settings, including type of lens, relevant camera settings, and "flash" or "no flash"] [Insect Order – Common Name]
1. Entomology exhibits are judged on the following categories: Orders, Species, Common Names, Labels, Quality of Photograph. Check with county 4-H Agent for point distribution on score sheet.
 2. Digital insect collections will be penalized if they:
 - a. Consist of images that were created by someone other than the 4-Her
 - b. Are not submitted and labeled according to guidelines
 3. No extra credit will be given for photographs submitted beyond the numbers listed in the current project books.

HONEY

Honey will show better in oval, flat sided to square clear glass containers. 4-H'ers **must** use standard honey jars. **Except class 696, wide-mouth mason jars or wide-mouth honey jars may be used.** The jars and lids must be clean. **Fill jars to within ½ inch of top.** Note: Two jars must be submitted for the following classes.

- | | |
|-----|---|
| 692 | Two one pound containers of white extracted honey |
| 693 | Two one pound containers of light amber extracted honey |
| 694 | Two one pound containers of amber extracted honey |
| 695 | Two one pound containers of dark amber extracted honey |
| 696 | Two wide mouth quart jars of chunk honey, any color. |

DIVISION 6027 - 4-H FORESTRY

4-H Forestry exhibits will be divided into the following classes:

FIRST YEAR

- 703 Leaf Collections
Collection of 10 leaves representing 10 forest trees found in Kentucky. Mounting instructions in the forestry book, "4-H Forestry Project Unit I - Introducing Yourself to Trees" (4DF-01PA or most recent version) Activity #1 are to be followed.
- 704 Leaf Print Collection
Collect and print 10 leaves representing 10 forest trees found in Kentucky. Instructions in the forestry book, "4-H Forestry Project Unit I - Introducing Yourself to Trees" (4DF-01PA or most recent version) Activity #3 are to be followed.

SECOND YEAR

- 705 Leaf Collection-2nd year
Collection of 20 leaves representing 20 forest trees and *different from ones done by same exhibitor in first year project* found in Kentucky. Mounting instructions in the forestry book, "4-H Forestry Project Unit I - Introducing Yourself to Trees" (4DF-01PA or most recent version) Activity #1 are to be followed.
- 706 Educational Exhibit
Develop a creative educational exhibit on some phase of forestry. The exhibit may utilize any visual technique. The total exhibit is not to exceed dimensions of 2' x 2', or four (4) square feet.

THIRD YEAR AND OVER

- 707 Educational Exhibit
Develop a creative educational exhibit on some phase of forestry. The exhibit may utilize any visual technique. The total is not to exceed dimensions of 3'x3', or nine (9) square feet.
- 708 Stem, Leaf, Fruit display
Collect and mount 5 stems, leaves and fruit representing 5 forest trees found in Kentucky. **Follow closely the instructions in the forestry book**, "4-H Forestry Project Unit I - Introducing Yourself to Trees" (4DF-01PA or most recent version) Activity #2 is to be followed, including the 2' x 3' *exact* size.

DIVISION 6028 - GEOLOGY

4-H Geology exhibits will be divided into the following classes:

1. Display boxes must be no less than 16" no more than 20" vertically and no less than 22" no more than 24" horizontally. All boxes must have Plexiglas cover that can be easily removed for judging.
2. EACH exhibit must be secured with a lock. Attach a key to box with your name and county firmly attached to key. Key will be returned to 4-H agent. Keep another key in case State Fair key is misplaced.
3. Hinges and Locks: Make flush or mount on sides or top of boxes so boxes will sit level.
4. Fabric: If fabric is used, use a fabric glue to adhere entire piece of fabric to box. Suggested fabrics are felt or velveteen.
5. Rocks, Minerals, and Fossils: Should be firmly attached to the box, and should be numbered to correspond with the number on the Geology Identification Labels. (4DB-01SO)
6. Boxes will be displayed on their side, not flat. Therefore, larger specimens must be attached near the lower portion of the box.
7. Geology Identification Labels (4DB-01SO) available from the County Extension Agent for 4-H or 4-H website. These are the only labels acceptable.
8. Exhibits will be disqualified for class champion if:
 - a. Box does not fit in the size stated in rule 5
 - b. Box contains too few or too many specimens
 - c. Box does not have a Plexiglas cover that can be opened
 - d. Labels not correctly filled out.
 - e. Specimen is mounted jewelry
 - f. Specimen is mounted and polished
 - g. Specimen and label are not numbered
 - h. Specimens are not arranged in numerical order
 - i. Duplicate specimens are used to reach minimum number
9. The following score card will be used to judge geology exhibits:
 - a. Correct identification and labeling - 5 points for each specimen
 - b. Neatness, arrangements, background - 20 points for total exhibit
10. Class champion will be selected in each class with a Grand Champion and Reserve Grand Champion selected from Class Champions.
11. 4-H'ers entering the fifth year and higher cannot enter the same exhibit that has been judged in any previous State Fair.

Classes are:

* For each of the classes, specimens may consist of rocks, minerals, and/or fossils. There is a separate label for rocks, minerals, and or fossils (three different labels).

- 715 First year geology - consisting of 15 different specimens.
- 716 Second year Geology - consisting of 25 different specimens (up to 12 may be from previous project year) (no more than 2 boxes)
- 717 Third Year Geology - consisting of 35 different specimens (up to 17 may be from previous project year) (no more than 2 boxes)
- 718 Fourth Year Geology - consisting of 50 different specimens (up to 25 may be from previous project year) (no more than 2 boxes)
- 719 Special collection for fifth year or higher members - creative, advanced display of member's choosing that depicts a geological process, theme, story, or manufacturing process. Posters, notebooks and written narratives may be included.

DIVISION 6029 – 4-H ARTS & CRAFTS

4-H Arts exhibits will be divided into the following classes:

1. All classes are from Portfolio Pathways (Section A) and Sketchbook Crossroads (Section B) 4-H Core Curriculum except for Trends and Heritage Crafts.
2. Junior: Any member age 9-13. Senior: Any member age 14-19.
3. Seniors must submit an artist statement label card. This card can be found at the local 4-H Office
4. **Each Exhibitor may enter only two (2) classes per sections A & B per year, and one (1) per section C per year.**
5. **All items must have been made since the last State Fair.**
6. Exhibits will be disqualified if:
 - a. Pictures or other hanging items do not have an **attached hanger** (wire hangers must be secure and attached to the frame for paintings and drawings only). **No wire hooks taped to back. All hangers must support the weight of item.** Pictures should be ready for hanging. May include frame or securely attached hanger (canvas).
 - b. Pictures are not mounted on firm **mat**, not foam core and/or framed **with attached hanger. No poster board allowed.**
 - c. Seniors do not have an artist statement.
 - d. If subject matter is not "family friendly" in context.

Small items, which are easily separated or destroyed, may be placed in small plastic bags. For items with more than one piece, a description on the back of the ID card is suggested with number of pieces, color, description, etc.

Painting

SECTION A: Portfolio Pathways

- 727a. Junior Acrylic Still Life: (pg.12) Using acrylic paint to create a Still Life.
- 727b. Senior Acrylic Still Life: (pg.12) same as Junior.
- 728a. Junior Water Color: (pg.14) Using watercolors and a variety of techniques to complete a painting on watercolor paper.
- 728b. Senior Water Color: (pg. 14) same as Junior.
- 729a. Junior Abstract: (pg.18) Using acrylic paints experiment with abstract designs to complete a painting.
- 729b. Senior Abstract: (pg. 18) same as Junior
- 730a. Junior Sand Painting: (pg.20) On an 8"x10" x1/4" sanded plywood or particle board. Explore painting with colored sand mixed with glue.
- 730b. Senior Sand Painting: (pg.20) same as Junior.
- 731a. Junior Self Portrait: (pg.22) Using acrylic or watercolor paints. Complete a self- portrait using any drawing or painting technique.
- 731b. Senior Self Portrait: (pg. 22) same as Junior.
- 732a. Junior Human Action: (pg.24) Using acrylic or watercolor paints, capture human action through the use of vivid colors, lines, and texture when painting.
- 732b. Senior Human Action: (pg.24) same as Junior.
- 733a. Junior Oil Painting: (pg.26) Using oils on canvas or canvas board. Experiment with different techniques of laying oil to canvas to create a finished painting.
- 733b. Senior Oil Painting: (pg.26) same as Junior.
- 734a. Junior Oil Landscape: (pg.30) On a 16"x18" stretched and primed canvas, canvas board or sheet of Masonite coated in gesso. Lay out a one-point landscape perspective drawing and use oil paints to show atmosphere and distance.
- 734b. Senior Oil Landscape: (pg.30) same as Junior.

Printing

- 735a. Junior Intaglio Collagraph Print: (pg.38) On 8 ½" x 11" paper. Create a collagraph block at least 6" wide and create any color print using intaglio printing method.
- 735b. Senior Intaglio Collagraph print: same as Junior.
- 736a. Junior Blueprint Paper Print: (pg.40) On blueprint paper create a sun print; at least 5 ½ x 8 ½ in. using cyanotype or Light or sun sensitive paper.
- 736b. Senior Blueprint Paper Print: same as Junior.
- 737a. Junior Etched Plexiglas: (pg. 42) Create an original print using an etched Plexiglas plate. The print should be at least 5 ½"x 8 1/2" in. Plexiglas etching uses the intaglio method of printing.
- 737b. Senior Etched Plexiglas: same as Junior.
- 738a. Junior Wax Resist Print: (pg.44) Create intricate designs for printing using a wax resist method.
- 738b. Senior Wax Resist Print: same as Junior.
- 739a. Junior Tire Stamp Print: (pg.46) Cut pieces of inner tube tire, glue it onto a wood block, and print using a stamp pad.
- 739b. Senior Tire Stamp Print: same as Junior.

- 740a. Junior Linoleum Print: (pg.48) Create linoleum print using linoleum block on paper.
- 740b. Senior Linoleum Print: same as Junior
- 741a. Junior Hand Drawn Negative Photograph: (pg.51) You will draw a negative on frosted acetate, then print onto photographic paper (8"x10" in.) as a positive, using a photographic process.
- 741b. Senior Hand Drawn Negative Photograph: same as Junior.

Graphic Design

- 743a. Junior 5 Color Design: (pg.62-63) Create (2) two 8"x 10" in. landscapes. 5 color designs are identical except for (1) one color. Change (1) one color to create a second design. Use paint, paper or computer graphics program. Mount on a matt board.
- 743b. Senior 5 Color Design: same as Junior
- 744a. Junior Computer Drawing: (pg.70) Explore the use of computer tools and techniques to doodle, draw and replicate images. Print out each design showing the use of various tools.
- 744b. Senior Computer Drawing: same as Junior.

Drawing

Section B: Sketchbook Crossroads

- 745a. Junior Contour Drawing: (pg.12) Draw objects using the contour drawing method. Do 2-3 drawings of the same object from different angles.
- 745b. Senior Contour Drawing: same as Junior
- 746a. Junior Two Point Perspective: (pg. 16) On sketch paper, draw a two point perspective that has a point at each end of a horizontal segment.
- 746b. Senior Two Point Perspective: same as Junior.
- 747a. Junior Circular Shape Object: (pg.18) Draw a subject to fit a circular shape.
- 747b. Senior Circular Shape Object: same as Junior.
- 748a. Junior Color Pencil: (pg.20) Draw with colored pencils and use turpenoid to blend the colors.
- 748b. Senior Color Pencil: same as Junior.
- 749a. Junior Pen and Ink: (pg.22) Sketch animals or other objects using pen and ink.
- 749b. Senior Pen and Ink: same as Junior
- 750a. Junior Calligraphy: (pg. 24) On 8 ½ by 11 paper, rewrite a quote, poem or pledge using Calligraphy. Make sure to include the author on the piece.
- 750b. Senior Calligraphy: Same as Junior
- 751a. Junior Cartooning: (pg.27) Cartooning is a simple process of making line drawings show sequential motion. Create your own cartoon character showing motion.
Must create at least three blocks.
- 751b. Senior Cartooning: same as Junior.

Fiber Arts

- 752a. Junior Felted Wool Applique Mat: (pg31) Felt wool to create a design. Applique design to a felted wool mat. Max size of mat 18" x 24" in. Use 100% wool to felt.
- 752b. Senior Felted Wool Applique Mat: same as Junior.
- 753a. Junior Cotton Linter Bowl: (pg. 34) Experiment with cotton linter using molds and shaping the linter to form bowls. Enhance the cotton with colored pencils, threads, floss, dried flowers to make a unique creation.
- 753b. Senior Cotton Linter Bowl: same as Junior.
- 754a. Junior Batik Fabric: (pg.37) Using natural fiber fabric. Create a unique fiber artwork using dyes and the wax resist method.
- 754b. Senior Batik Fabric: same as Junior.
- 755a. Junior Lap Loom Woven Place Mat: (pg.40) Set up a lap Loom. Using several colors or types of yarn create a woven placemat.
- 755b. Senior Lap Loom Woven Place Mat: same as Junior
- 756a. Junior Inkle Loom Basket: (pg.44) Weave 4-6 stripes that are identical. Sculpt a basket out of several woven strips by stitching them together in a spiral.
Manipulate the strips to form the bottom of the basket.
- 756b. Senior Inkle Loom Basket: same as Junior.

Sculpting

- 757a. Junior Clay Container: (pg.55) Create a functional container from clay either self-hardening or firing required.
- 757b. Senior Clay Container: same as Junior.
- 758a. Junior Clay Bust: (pg.57) Sculpt a head with facial features out of clay. 758b. Senior Clay Bust: same as Junior
- 759a. Junior Mask: (pg.61) Create a mask using clay emphasizing unique form and texture to portray feelings.
- 759b. Senior Mask: same as Junior.
- 760a. Junior Cardboard Sculpture: (pg.65) Create a piece of textured relief sculpture using corrugated cardboard stacked and glued together. Sculpt with an Exacto® knife.
- 760b. Senior Cardboard Sculpture: same as Junior.
- 761a. Junior Flower Wire Sculpture: (pg.67) Using wire and nylon cloth create a freestanding flower sculpture.
- 761b. Senior Flower Wire Sculpture: same as Junior.
- 762a. Junior Plaster of Paris Carving: (pg.69) Using a plaster of paris block, carve a form that has a concave and convex surface and allows space

to flow around and through it.

762b. Senior Plaster of Paris Carving: same as Junior.

Section C: Art Trends and Traditions

This section will be highlighting the latest trends in art while honoring our heritage. Art trends will be selected every two years. Heritage crafts will be open to any heritage craft.

Documentation for the Heritage Craft Classes is REQUIRED. If required documentation is not attached the item will be disqualified. You may enter one entry per year in this section.

763a. Junior Art Trends – Mixed Media. Mixed media is defined employing more than one medium.

763b. Senior Art Trends—Mixed Media

764a. Junior Heritage Craft- See below for definition.

764b. Senior Heritage Craft.

Heritage Crafts

According to various sources, heritage can refer to practices or characteristics that are passed down through the years, from one generation to the next. Kentucky 4-H believes in celebrating one's heritage through recognition of crafts that be representative of one's culture examples may be baskets, brooms, etc. To successfully enter Heritage Crafts the 4-H'er must create the Heritage Craft piece after State Fair of the previous year, complete the following description and visibly attach it to the piece.

DIVISION 6030 – 4-H PHOTOGRAPHY

4-H Photography exhibits will be divided into the following classes:

1. Specification for exhibits:
 - a. All general photography classes are taken from 4-H Photography Core Curriculum (Focus on Photography, Controlling the Image and Mastering Photography).
 - b. one (1) entry per class in both general photography and horticulture photography. Only one entry per class
 - c. General photography (levels 1, 2 & 3): 4-Hers can enter 3 classes in any one level (curriculum) per year.
 - d. Horticulture photography: a 4-H'er may enter any of the classes in addition to general photography.
 - e. All pictures must be made since the last State Fair.
 - f. All classes (*including Horticulture*) WITH ONE PHOTOGRAPH MUST BE MOUNTED ON WHITE 10"x 16" MAT BOARD-available via order entry (no poster board or foam core board accepted). Single photographs are limited to up to a maximum size of 8"x 12". Pictures cannot be framed or matted with colored mat board.
 - g. All classes (*including Horticulture*) WITH MULTIPLE PHOTOGRAPHS (More than 1 photograph) MUST BE MOUNTED ON WHITE 16" x 20" MAT BOARD (no poster board or foam core board accepted). Pictures cannot be framed or matted with colored mat board.
 - h. Each picture must be mounted securely. Rubber cement or dry mounting tissue is recommended. Do not use photo mounting corners.
 - i. If labels are required for pictures, it must be typed, on white paper, and placed directly below the photograph it is identifying.
2. Photography will be judged on, but not limited to: Technical, impact, composition, creativity, presentation, and the ability of the picture to tell a story.

LEVEL 1 Focus on Photography- Class descriptions in curriculum

- 764 Fun with Shadows, pg. 22 Photograph shadows to create a mood or element of surprise. Two (2) photographs of shadow shapes and three (3) photographs that show how the shadow of a subject can "grow" or shrink over time.
- 765 Directing the Light, pg. 26 Four (4) Photographs. Using either natural or artificial light take photographs of subject with; Front lighting, Back lighting, Side lighting, and Top lighting (overhead).
- 766 What Do You See? pg. 34 Display three (3) photographs. (A) 1- Landscape with foreground, Middle ground, and background, labeled 1, 2, 3, (B) 1- Landscape with a foreground object that frames the photograph. (C) 1- portrait of a person without background clutter.
- 767 Bird's Eye View, pg. 46 Display four (4) photographs, one from each Position. a.) Lying on your stomach, b.) Lying on your back, c.) Leaning over, d.) Bending sideways
- 768 Hat Tricks and Magic, pg. 50 Display 4 photographs that show the following special effects. Give each photograph a title.
 - a. Hat Trick: Have a plant growing out of the subject
 - b. Hand Stand: Have it look like someone is holding a person in their hand
 - c. Magic: Set up the photograph to look like a person is hanging from the ceiling.
 - d. Bad Hair Day: Position a person to look like their hair is sticking straight up.
- 769 Photos Can Tell a Story, pg. 58 A sequence of 3-5 photographs that tell a story. There should be a beginning, a middle and end.
- 770 Black and White, pg. 62 3-5 Black and White photographs that show texture, shape and composition. The interest is in the contrast, light and shadows.

LEVEL 2 Controlling the Image-Class description in curriculum

- 771 Golden Photo, pg. 38 Display 4 photographs, labeled.
 - a. 1 photo – Rule of Thirds
 - b. 1 photo – Using the Golden Triangle
 - c. 1 photo – Using the Golden Rectangle
 - d. 1 photo – That doesn't follow the rules.
- 772 The Space Tells a Story, pg. 46 Display 1 photograph that shows good use of positive and negative space.
- 773 Capture a Candid Photo, pg. 48 Create a candid collection (3-5) photos. Take photographs at a party, parade, sporting event or family reunion. Try to capture the emotions of the event.
- 774 Freeze the Moment, pg. 54 Display 2 photographs that use shutter speeds to show action.
 - a. setting # 1 – Set shutter speed 1/250 to freeze action for a clear photograph.
 - b. setting #2—set the shutter speed at 1/30 Label the shutter speed of the photograph.
- 775 Panning the Action, pg. 58 Display two (2) photographs; one (1) showing panning technique and one (1) showing blurring of motion.

- 776 Bits and Pieces, pg. 62 Display one (1) photograph. Fill the frame with small parts of a whole subject. Choose bits and pieces for close-ups.
- 777 Panoramas, pg. 66 Take a series of photographs to create a panorama.

Level 3 Mastering Photography-Class description in curriculum

- 778 Reflections, pg. 30 Two (2) reflections photographs. Label each with time, location, and camera setting. Take pictures of reflections as subjects.
- 779 Still-Life, pg. 42 Show two (2) series of at least three (3) photographs showing different arrangements and techniques of a still-life. Choose two (2) Experiments:
- Similar Themes
 - Similar Colors
 - Different Lighting
 - Your Interest
- 780 Say "Cheese", pg. 46 Display two (2) formal portraits and two (2) informal portraits
- 781 Mastering Composition, pg. 50 Display four (4) photographs. One (1) from each collection.
- Symmetry vs Asymmetry
 - Pattern and Texture
 - Shape and Form
 - Visual Rhythms
- 782 Expression Through Color, pg. 54 Display three (3) photographs that illustrate Monochromatic, Contrasting, and Complementary color techniques- Label each one.
- 783 Details! Details!, pg. 58 Display three (3) to five (5) examples that highlight details in a subject you explored.
- 784 Pictures With a Purpose, pg. 62 Display 2-3 photographs that could be part of a brochure. Include words that market the product, event or the Organization.
- 785 How Did They Get That Picture?, pg. 66 Display 3-5 Photographs taken with advanced or specialized equipment.

HORTICULTURAL PHOTOGRAPHY EXHIBITIONS

Horticulture is the science, art, technology and business concerned with intensively cultivated plants that are used by people for food, for medicinal purposes, and for aesthetic gratification.

Horticulture is divided into two categories:

The cultivation of plants for food (pomology and olericulture):

- Pomology deals with fruit and nut crops. (not included in photography classes)
- Olericulture deals with herbaceous plants for the kitchen, including, for example, carrots (edible root), asparagus (edible stem), lettuce (edible leaf), cauliflower (edible flower), tomatoes (edible fruit), and peas (edible seed). (included in photography classes)

Plants for ornament (floriculture and landscape horticulture).

- Floriculture deals with the production of flowers and ornamental plants; generally, cut flowers, pot plants, and greenery. (included in photography classes)
- Landscape horticulture is a broad category that includes plants for the landscape, including lawn turf, but particularly nursery crops such as shrubs, trees, and climbers. (not included in photography classes)

For the purposes of the Kentucky 4- Horticulture Photography Contest, only photographs representing the areas of Olericulture and Floriculture will be accepted.

NJHA Contest: Entries in the following classes may also participate in the National Junior Horticulture Association Photography Exhibition. It is the responsibility of the individual to submit all required entry forms and follow all rules set out by NJHA organization to participate. States are not limited in the number of entries. See web site for details: www.njha.org

HORTICULTURAL PHOTOGRAPHY CLASSES

- 786 Single black and white. Horticultural subject or activity. (Maximum size: 8" x 12")
- 787 Single color. Horticultural subject or activity. (Maximum size: 8" x 12")
- 788 Sequence of 4 photographs. B&W or Color representing a horticultural event or activity that tells a visual story, chronologically, without the use of words.
- 789 Horticulture collection (B&W or color), consisting of 6 photographs.

DIVISION 6032 - 4-H SEWING

1. Unique Rules or Instructions:

- a. Items must be "handmade"; no ready-to-wear/factory made items will be accepted for judging.
- b. Items must be **CLEAN**, however it is permissible for garment to show wear.
- c. Send **NO additional** accessories or undergarment with any sewing entry unless it was constructed as a part of the project.
- d. Specific number of items: In classes where there is to be a specified number of articles exhibited and the entry contains more, the judges will be instructed to have the agent who submits the article(s) make the decision on which item(s) are to be judged. In those cases where the situation was not discovered before entry was made, the article(s) to be judged will be left to the discretion of the judges.
- e. Complete outfit: The definition of a "complete outfit" is an item or items that cover the top and bottom of the body. To be considered a top, a jacket or robe, it must include a front closure. Open front tops that require an undershirt do not count as a complete outfit unless the under shirt is also constructed by the member.

2. Additional Documentation Required:

- a. 4-H Sewing Project Card: **no longer** required.
- b. Documentation is required only in Junior Unit VI non-clothing option and Up Cycle Jr & Sr. projects.
 - i. Documentation may be handwritten or printed by computer on 8.5" X 11" paper.
 - ii. Insert documentation into an inexpensive folder or plastic sheet protector.

3. Class Descriptions:

Junior Division for 4-H'ers Ages 9-13 (Members may complete the projects in any order and may repeat a level more than one year. The curriculum includes instructions for making "practice" items; the practice items do not fit in classes in the Clothing Division.)

Unit I – Let's Learn to Sew: Beginner skills;

789 Unit I Clothing Option: Shorts, pants, or skirt with casing waistline (elastic and/or drawstring). *Garment must be made from woven fabric and include the following: straight machine stitching, appropriate visible seam finish, and machine stitched hem. This class is for ages 9-13.*

790 Unit I Non Clothing Option: Drawstring backpack OR tote bag with fabric handles OR a laundry bag. *Item must be made from woven fabric and include the following: straight machine stitching, appropriate visible seam finish, and a casing or machine stitched hem. This class is for ages 9-13.*

Unit II – Let's Get to the Bottom: Beginner skills;

791 Unit II Clothing Option: Skirt, shorts or pants. *Exhibit must be made from woven fabric and include the following: enclosed seams, appropriate seam finish, interfacing, zipper, and a facing or waistband. This class is for youth ages 9-13.*

792 Unit II Non Clothing Option: Zippered tote bag, purse, garment bag, or gym bag. *Exhibit must be made from woven fabric and include the following: enclosed seams, appropriate seam finish, interfacing, and zipper. (Pre-quilted woven fabric and recycled woven fabric are acceptable fabric choices but use is not required.) This class is for youth ages 9-13.*

Unit III – Top It Off: Beginner skills;

793 Unit III Clothing Option: Shirt, simple jacket, one piece dress with no waistline, cape with a hood or collar, bathrobe, or vest with lining or facing. *Garment must be made from woven fabric and include the following: buttons and buttonholes. A simple lining, trim, collar, and sleeves may be included but are not required. This class is for youth ages 9-13.*

794 Unit III Non Clothing Option: Backpack with lining, applied trim, and button/buttonhole closure. *This class is for youth ages 9-13.*

Unit IV – Stretch Your Knit Skills: Beginner skills;

795 Unit IV Stretch Your Knit Skills: 1 or 2 piece complete outfit made from knit fabric; such as a dress, top and bottom, pajamas, or nightshirt. *All garment pieces must be made from knit fabric with a limited amount of one-way stretch; rib knit may be included for neckband and arm/leg band trim only. This class is for youth ages 9-13.*

Unit V – Moving on Up: Intermediate skills;

796 Unit V Moving on Up: one-piece complete outfit made from woven fabric; such as a dress, coveralls, or jumpsuit. Item must include at least a zipper and/or buttons and buttonholes. A waistline simple lining, trim, collar, and sleeves may be included but are not required. This class is for youth ages 9-13.

Unit VI – Put it All Together;

797 Unit VI Put It All Together Clothing Option: 2 or 3 piece complete coordinating outfit; such as warm up suit; dress with jacket or coat, swimwear with cover-up, jacket or shirt with slacks/ skirt. *At least one piece must include sleeves and a collar/hood. No simple casings. Fabric choice may be woven, knit or a combination of the two. This class is for ages 9-13.*

798 Unit VI Put It All Together Non Clothing Option: Original design tote bag and documentation folder - Using Wild Ginger Software, Inc. **Wild Things!** Software program, select the Tote Bag option and design a bag that includes at least 2 pockets. Be creative with your design. Required elements: at least 2 pockets; minimum size of 12 inches in height and 12 inches in width. Item must have at least one functional zipper; and creative stitchery or applied trim to personalize your bag. Optional elements: lining, other type closure as design dictates [button(s), hook and loop tape, or snap(s)]. If bag is not lined, it is suggested that the seam allowances be finished with a bound seam finish. This class is for ages 9-13. **In the documentation include:** your name, your county, the name of the unit, class entered, number of years you have been sewing, cost, and the printed design sheets (one for each pocket selected) from the program, and answers to the following questions:

1. How did you choose the size of your tote bag? Did you use any of the default settings in the program?
2. Did you have any trouble using the software or printing your pattern? Explain
3. Did you download the Wild Things! Program to your home computer or use the program at your county extension office?
4. Did you make any changes to your pattern after it was printed? If so, tell what you changed.

Unit: Up Cycle It!—for youth ages 9-13 with advanced sewing skills;

799 Up Cycle It! Junior—item sewn from recycled/repurposed garments and documentation folder: Sew a garment or fashion accessory from previously worn garments. Recycled fabric is to be the major component of the item. Recycled garments may be cast-offs from the member's family/friends or purchased at a yard sale or similar low cost source. **Documentation is required.** In documentation include the following: your name, your county, the name of the unit, class entered, number of years you have been sewing; a "before" photo of all recycled items used; source of the recycled garment; how the design was created; and any design drawings that were used in the creation. Place documentation in a folder or plastic sheet protector. "Deconstructed" t-shirts which do not include sewing skills do not fit this class. Items for the home do NOT fit this class. Items which do not include sewing as a major means of reconstruction are not eligible for this class. See publication: This class is for ages 9-13 with sewing skills.

Senior Division for 4-Hers age 14-18 (members may complete the projects in any order and may repeat a level more than one year)

Unit: Let's be Casual- for ages 14-18.

800 Let's Be Casual--Clothing Option: 1 or 2 piece complete outfit made from knit or woven fabric such as a dress, top and bottom, simple pajamas, or robe. This class is for ages 14-18.

801 Let's be Casual--Non Clothing Option: 2 coordinating fashion accessories from the following: wallet, garment bag, purse, backpack or duffel bag. At least one piece must have a zipper. This class is for ages 14-18.

Unit: Dress it Up- for ages 14-18.

802 Dress It Up 1 or 2 piece complete dressy outfit, such as a dress, suit, pantsuit, sport coat and slacks. Fabric choice may be woven, knit or a combination of the two. This class is for ages 14-18.

Unit: Match it Up- for ages 14-18.

803 Match It Up--Clothing Option: Choose at least one item from each group to make a complete 3 or 4 piece coordinated outfit:

- Shorts, pants, or skirt
- Top, blouse, shirt
- Vest, jacket, sweater

At least one piece is required to have regulation set in sleeves. Fabric choice may be woven, knit or a combination of the two. An accessory item may be included as the fourth piece. This class is for ages 14-18.

804 Match It Up--Non Clothing Option: 3 or 4 piece coordinating luggage/travel accessories set. Each piece must have an applied border/trim, pocket and zipper. This class is for ages 14-18.

Unit: Creative Expressions- for ages 14-18.

805 Creative Expression--Clothing Option: Construct a complete outfit for one of the following activities:

- Halloween, theater, or historic costume
- Uniform for medical, cheerleader, dancer, etc.
- Riding apparel

This class is for ages 14-18.

806 Creative Expression--Non Clothing Option: Select one of the following and construct a:

- Fabric doll or animal with a wardrobe of two outfits
- Machine appliquéd specialty flag or decorative banner (minimum size 24 inches x 24 inches)

This class is for ages 14-18.

Unit: Leisure Time- for ages 14-18 with advanced skills.

807 Leisure Time--Clothing Option: 2 or 3 piece complete outfit. Choose from the following:

- Athletic wear such as leotard, cycling wear, warm-up suit, bathing suit and cover-up, tennis wear
- Pajamas and robe (must use specialty fabric such as terry cloth, flannel, fleece, nylon tricot)
- Raincoat and hat or rain suit

This class is for ages 14-18.

Unit: Formal Affair- for youth ages 14-18 with advanced skills.

808 Formal Affair--1 or 2 piece complete outfit, such as a prom dress, bridesmaid dress, or tuxedo. Fabric choice may be woven, knit or a combination of the two. This class is for ages 14-18.

Unit: Tailor Made- for youth ages 14-18 with advanced skills.

809 Tailor Made of Wool--Suit, jacket, or coat, made from 100% wool or a least 60% wool blend fabric. Traditional or speed tailoring techniques must be used to create structure in the areas of the neck, shoulder, and hemlines. **Do not include non-wool/wool blend coordinates.** This class is for ages 14-18.

Unit: Up Cycle It!—for youth ages 14-18 with advanced sewing skills;

810 Up Cycle It! Senior—item sewn from recycled/repurposed garments and documentation folder: Sew a garment or fashion accessory from previously worn garments. Recycled fabric is to be the major component of the item. Recycled garments may be cast-offs from the member's family/friends or purchased at a yard sale or similar low cost source. ***Additional documentation is required.*** In documentation include the following: your name, your county, the name of the unit, class entered, number of years you have been sewing; a **"before" photo** of all recycled items used; source of the recycled garment; how the design was created; and any design drawings that were used in the creation. Place documentation in a folder or plastic sheet protector. "Deconstructed" t-shirts which do not include sewing skills do not fit this class. Items for the home do NOT fit this class. Items which do not include sewing as a major means of reconstruction are not eligible for this class. "This class is for ages 14-18 with sewing skills.

DIVISION 6033 - 4-H NEEDLEWORK DEPARTMENT

4-H Needlework exhibits will be divided into the following classes:

Documentation *may* be required. Refer to the specific project for details.

CROCHET Category

- 813 **Item(s) made of medium weight yarn and single and/or double crochet stitches:** Such as: scarf, purse, belt, hat, pillow, two wash cloths (made from cotton yarn), afghan, shawl, vest, or pair of slippers.
- 814 **Item made with novelty yarn and single and/or double crochet stitches:** Such as: scarf, purse, belt, hat, pillow, afghan, shawl, vest, or pair of slippers.
- 815 **Item(s) made of granny squares:** May use any weight yarn.
- 816 **Item(s) made using intermediate skills/pattern crochet stitches:** Such as: toy, hat, belt, scarf, pair of mittens, pillow, sweater, vest, shawl or baby blanket, doily (made from bedspread weight thread) or set of 5 different ornaments (made from bedspread weight thread using intermediate skills/stitches. Include one or more pattern stitches—shell, arch, diamond, bobble, snapdragon, popcorn, cross, puff, cluster, or seed/granite. Can include one or more colors in alternating rows (stripes).
- 817 **Item or pair of items using advanced crochet skills:** include one or more of the following advanced skills: afghan stitch, beadwork, camel crochet, filet crochet, Irish crochet, Cro-knit/hook, Cro-tat, hairpin lace, or broomstick lace; combining pattern stitches with crocheted buttons and/or buttonholes; creating plaids, geometric designs or checks; making novelty crochet articles; or creating your own design. Original designs must include a copy of directions, notes and diagrams used to create the items(s). Suggested items include: multi-colored hat, purse, collar (made with bedspread-weight cotton thread), sweater, jacket, coat or toy.

HAND EMBROIDERY Category

All embroidery projects are to be a "finished" item (for example: the stitchery is framed or made into an item such as a pillow, wall hanging, pot holder, eyeglass holder, etc.) The stitchery can be created on a purchased item, such as a pillowcase, clothing, tote bag, purse, bib, or dishtowel. Items may be made from purchased kits that meet the individual project guidelines.

The sizes mentioned in the classes below (such as 5" X 7") relate to the amount of stitching, not the size of the fabric, frame, or finished item.

- 818 **Item using one type of embroidery** from the following:
- Embroidery item made with a single color of floss. Must use the stem stitch and have an embroidered area equivalent to 5 x 7 inches or larger.
 - Cross stitched design stamped on plain woven fabric and have an embroidered area equivalent to 5 x 7 inches or larger.
 - Cross stitched border using a design stamped on plain woven fabric that has an embroidered area equivalent to 2 x 16 inches or larger.
 - Cross stitched item using ¼-inch checked gingham fabric and have an embroidered area equivalent to 5" X 7" or larger. The design was stitched by following a chart or graph of the design, not stamped or drawn on the fabric.
- 819 **Item using multiple types of embroidery stitches** from the following:
- Candlewicking design stamped on plain woven fabric. Must include stem/outline, satin and colonial knot stitches and have an embroidered area equivalent to 5 x 7 inches or larger.
 - Free embroidery on plain woven fabric or felt. Must include three or more of the following different stitches (stem/outline, lazy daisy, running, straight, French knot, satin, blanket, chain, or back stitch). May use more than one color of floss. Must have an embroidered area equivalent to 5 x 7 inches or larger.
- 820 **Item of charted embroidery using large cross or snowflake stitches** from the following:
- Cross Stitch on Gingham: Cross stitch on ¼-inch gingham and have an embroidered area equivalent to 5 x 7 inches or larger.
 - Counted cross stitch on 11 count Aida cloth and have an embroidered area equivalent to 5 x 7 inches or larger.
 - Snowflake embroidery (Chicken Scratch) on ¼ inch or smaller checked gingham fabric. Must have an embroidered area equivalent to 5 x 7 inches or larger.
- 821 **Item of crewel embroidery:**
Crewel embroidery design on linen or cotton twill fabric using crewel or Persian yarn. Must have an embroidered area equivalent to 6 x 8 inches or larger.
- 822 **Item of charted embroidery using specialty cloth** from the following:
- counted cross stitch on 14 count Aida cloth or other fabric using waste canvas. Must an embroidered area equivalent to 5 x 7 inches or larger.

- Huck embroidery on huck toweling creating a minimum 2 inch wide border design.
- Swedish weaving on monk's cloth creating a minimum of 6 inch wide border design.

823 **Item of embroidery using advanced skills** from the following:

- silk ribbon embroidery using 5 or more embroidery stitches with silk ribbon. Design may also include embroidery floss.
- Crazy quilt patchwork constructed of irregularly shaped fabric pieces embellished with a combination of ribbon work, specialty thread, embroidery stitches, and/or beadwork creating a finished crazy quilt design.
- counted cross stitch on 18 or 22 count even weave or Aida cloth. Must have an embroidered area equivalent to 5 x 7 inches or larger.
- English smocking, minimum smocked area equivalent to 4 x 6 inches. Design must include at least 5 different smocking stitches.

KNITTING Category

The objective is for youth to learn the skills involved in hand knitting with needles. Therefore items made on a knitting loom or knitting machine are NOT to be entered and will not be judged.

824 **Small/simple knitted item(s):** Items such as a hat, pillow, purse, scarf, belt, doll afghan, or two wash cloths using worsted weight yarn. Solid color or variegated yarn is acceptable. Wash cloths should be made from worsted weight cotton yarn. Items are limited to those that include garter stitch, stockinette stitch, and/or ribbing stitch. Items made on a knitting machine or looms do not fit in this class.

825 **Knitted Scarf from Novelty Yarn:** Knitted scarf created from any novelty/decorative yarn. Scarf must be at least 24" long. Items made on a knitting machine or looms do not fit in this class.

826 **Larger/simple knitted item(s):** Items such as a hat and scarf; pair of mittens; pair of slippers, shawl; or afghan (minimum size equivalent to 36" x 36"). May use yarn other than worsted weight yarn. Two colors and one pattern stitch may be used in addition to garter stitch, stockinette stitch, and/or ribbing stitch. Items made on a knitting machine or looms do not fit in this class.

827 **Knitted project focused on Shape:** Exhibit one item or a pair of items using pick up stitches, multiple color changes (stripes or duplicate stitch), and/or circular knitting. Item must include increase or decrease. May use yarns other than worsted weight yarn. Ideas such as: gloves, hat, mittens, socks, leggings, stuffed toy, skirt, sweater, or vest. Items made on a knitting machine or looms do not fit in this class.

828 **Knitted project focused on Design:** Exhibit one item or a pair of items using charted designs or design your own. Chartist designs may include color changes such as Fair Isle Intarsia, and Mosaic knitting. Original designs must include a copy of directions, notes, and any diagrams used to create the item. Ideas such as: pillow, afghan (minimum size 45-x 60-inches), holiday stocking (minimum 18-inches in length), purse, pair of socks, sweater. Items made on a knitting machine or looms do not fit in this class.

829 **Knitted project focused on Texture:** Exhibit one item or pair of items using charted designs or design your own. Chartist designs must include multiple pattern stitches such as Aran Isle knitting or lace knitting. Knitting with beads is also acceptable. Original designs must include a copy of directions, notes, and any diagrams used to create the item. Ideas such as: cell phone holder, amulet, pillow, afghan (minimum size 45-x 60-inches), holiday stocking (minimum 18-inches in length), purse, pair of socks, sweater. Items made on a knitting machine or looms do not fit in this class.

LACEWORK – TATTING Category

830 **One thread tatting:** Tatted item or item embellished with tatted edging or tatted motifs using a tatting needle or shuttle and single thread. Item should include rings with picots and double stitches only. Item to which the tatting is attached may be purchased, made by member or by someone else. Judging is based on tatting and quality of workmanship in attaching it to the item.

831 **Two thread tatting:** Bookmark, jewelry, tatted embellishment on clothing or other item using size 5 needle or shuttle and 2 appropriate sized threads. Item must include chains and rings with picots and double stitches, may use one or two colors of thread. Item to which the tatting is attached may be purchased, made by member or by someone else. Judging is based on tatting and quality of workmanship in attaching it to the item.

832 **Advanced Tatting:** Exhibit one of the following items:

- Item of shuttle tatting using size 20 or 30 tatting thread. Options: Bookmark, jewelry, embellishment on clothing or other item. Item must include chains and rings with picots and double stitches, may use one or two colors of thread.
- Item of needle tatting using size 7 needle and appropriate sized tatting thread. Options: Bookmark, jewelry, embellishment on clothing or other item. Item must include chains and rings with picots and double stitches, may use one or two colors of thread.
- Item using either shuttle or needle tatting with the use of two threads and beads. Options: jewelry, advanced motif as embellishment on clothing or other item.

Item to which the tatting is attached may be purchased, made by member or by someone else. Judging is based on tatting and quality of workmanship in attaching it to the item.

QUILTING Category

All projects are to be a completed item that includes a pieced top, batting, backing fabric, and a finished outer edge. Quilting on long arm quilting

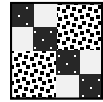
machines or hooped embroidery machines is not an option for the Needlework-Quilting project. Quilting or tacking should be done by hand or with the use of a conventional sewing machine. Refer to 4-H Quilting publications.

833 **Quilted Mat (12" x 12" finished size)**

Exhibit a 2 x 2 "quilt" made with four six-inch squares. At least two of the 6-inch squares must be patchwork designs in which square and/or rectangle pieces are pieced together (do not include triangle pieces).

Piecing technique: stitch by hand or sewing machine

Quilting technique: machine tack or hand tie, stitch by hand or use a conventional sewing machine (Do NOT use a long arm quilting machine or hooped embroidery machine.)

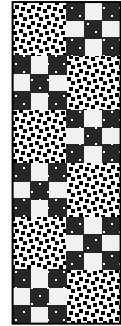


834 **Quilted Runner—machine tacked or hand tied (12" x 36" finished size)**

Exhibit a 1 x 3 four-block runner "quilt". Each four-block must include at least two 6-inch square patchwork blocks made with square and/or rectangle pieces (do not include triangle pieces).

Piecing technique: stitch by hand or sewing machine

Quilting technique: machine tack or hand tie.



835 **Quilted Runner—quilted by hand or sewing machine (12" x 36" finished size)**

Exhibit a 1 x 3 four-block runner "quilt". Each four-block must include at least two 6-inch square patchwork blocks made with square and/or rectangle pieces (do not include triangle pieces).

Piecing technique: stitch by hand or sewing machine

Quilting technique: stitch by hand or use a conventional sewing machine (Do NOT use a long arm quilting machine or hooped embroidery machine.)

836 **Hand Quilted Wall Hanging or Small Quilt (36" x 36")**

Exhibit a 4 or 9 block quilt or quilted wall hanging. Each block must measure 12 inches by 12 inches for the 4-block version or 9 inches by 9 inches for the 9-block version. Finished project must include appliqué and/or triangle pieces with sashing and/or borders. Finished quilt not to exceed 36 inches by 36 inches.

Piecing technique: stitch by hand or sewing machine

Quilting technique: stitch by hand using cross hatching, stitching in the ditch, or echo/outline quilting.

Edge finishing technique: Applied binding with mitered corners, hanging sleeve optional.

837 **Machine Quilted Wall Hanging or Small Quilt (36" x 36")**

Exhibit a 4 or 9 block quilt or quilted wall hanging. Each block must measure 12 inches by 12 inches for the 4-block version or 9 inches by 9 inches for the 9-block version. Finished project must include appliqué and/or triangle pieces with sashing and/or borders. Finished quilt not to exceed 36 inches by 36 inches.

Piecing technique: stitched by hand or sewing machine

Quilting technique: stitch using a conventional sewing machine using cross hatching, stitching in the ditch, or echo/outline quilting. (Do NOT use a long arm quilting machine or hooped embroidery machine.)

Edge finishing technique: Applied binding with mitered corners, hanging sleeve optional.

838 **Creative Quilt or Quilted Wall Hanging (at least 24" x 24" up to 48" x 48")**

Exhibit a creative quilt, minimum finished size 24 inches by 24 inches, maximum size 48 inches by 48 inches. Quilt top should include advanced piecing techniques joined by hand and/or machine that may include dimensional pieces, appliqué, foundation piecing, English paper piecing, miniature scale, and/or landscape design.

Piecing technique: stitch by hand or sewing machine

Quilting technique: Stitch by hand or conventional sewing machine using stippling or patterned/stenciled motifs. (Do NOT use a long arm quilting machine or hooped embroidery machine.)

Edge finishing technique: Applied binding with mitered corners, hanging sleeve optional.

DIVISION 6035 - 4-H FOODS EXHIBITS

1. Specifications for exhibits: (Those not meeting specifications listed below will be disqualified).
 - a. Member may enter up to 1 classes
 - b. Please call the extension office for the required recipes

Muffins

- 841 Three **Oatmeal Muffins**:
842 Three **Cheese Muffins**:

Biscuits

- 843 Three **Rolled Biscuits**:
844 Three **Scones**: raisins may be substituted for cranberries.

Quick Breads

- 845 Three **Cornmeal Muffins**:
846 Three pieces of **Coffee Cake with Topping**: Nuts are optional.

Cookies

- 847 Three **Chewy Granola Bars** (gluten-free): .
848 Three **Brownies**: Nuts are optional.
849 Three **Snickerdoodle Cookies**

Cakes

- 850 One 8" or 9" layer **Rich Chocolate Cake** (no icing):
851 One 8" or 9" layer **Carrot or Zucchini Cake** (no icing): 119. May use carrots or zucchini.
852 ¼ of a **Basic Chiffon Cake**: Do not use variations.

Pies

- 853 One whole **Double Crust Apple Pie**:. Leave pie in the disposable pie pan and place all in a zip-type plastic bag. May use spice variation if desired.

Yeast Breads

- 854 Three **Cinnamon Twists** (no icing):
855 Three **Soft Pretzels**: Use any one topping listed.
856 One loaf **Oatmeal Bread**:

Bread Made in a Bread Machine

- 857 One loaf **Honey Whole Wheat Bread** made in a bread machine: May be a 1-pound or 1 ½ pound loaf.

Candy

- 858 Three pieces **Classic Chocolate Fudge**: Nuts are optional.

DIVISION 6036 - 4-H FOODS PRESERVATION

4-H Food Preservation entries will be divided into the following levels and classes:

Please call (348-9204) the office for the recipe book and additional information regarding the recipe.

- 861 Dried Apples: Place 12 pieces of dried fruit in a container which is an example of a container suitable for long term storage of dried fruit. Label package with kind of fruit and date processed.
- 862 Salsa: (pint jar or smaller) canned using a boiling water canner. The USDA recommended headspace for salsa is ½ inch. Canning label must be completed by member and affixed to the jar.
- 863 Dill Pickles: (pint jar or smaller), canned using a boiling water canner: The USDA recommended headspace for pickles: ½ inch. Canning label must be completed by member and affixed to the jar.
- 864 Strawberry Jam: (half pint or smaller jar), canned using a boiling water canner. The USDA recommended headspace for jam is ¼ inch. Canning label must be completed by member and affixed to the jar. Write the type of fruit used on the canning label. Refrigerator and freezer jams are not appropriate for this class.
- 865 Green Beans: (One pint), canned using a pressure canner. Beans may be 'raw packed' or 'hot packed' but the packing method used must be indicated on the label. The USDA recommended headspace for green beans is 1 inch. Canning label must be completed by member and affixed to the jar.

DIVISION 6039 - 4-H HOME ENVIRONMENT

4-H Home Environment entries may be made in the following classes:

Unit I EXHIBITS from *Exploring Your Home* project book

- 887 **Color Collage** - (pp. 7-8, activity 3.) A collage of color created by the member to depict colors liked by the member. A collage is made up of a collection of objects (such as paper, fabric, wrapping paper, wallpaper, carpet, or other materials) artistically arranged and adhered to a mat board or foam core board.
- 888 **Texture Collage** - (pp. 8-9, see activities 1 & 2) A collection of textured items or rubbings of textured items artistically arranged and adhered to mat board or foam core board.
- 889 **Transparent finish applied to small wood object.** (pp. 13-14) Apply a clear finish such as tung oil, penetrating seal or polyurethane which does not include stain to a small wood object such as a bowl, tray, cutting board, board game or box. A transparent finish allows the wood grain to show through. Judging emphasis will be on how well the object is prepared for the finish and how well the finish has been applied, not the construction of the wood object. The wood object may be made by the member, made by someone else, purchased or found. Items that are stained or finished with paint do not fit in this class.
- 890 **Simple cloth item for the home** (Sewing machine may be used but is not required) Examples: decorative pillow, tablecloth, laundry bag, place mats; footstool with a seat made of woven fabric; fabric applied to an item such as a box, plate, or lampshade. Unacceptable: purses, tote bags, backpacks, duffle bags.
- 391 **Wastebasket** – (pp. 10-12) decorated by member
- 392 **Bulletin board** (must be ready to hang with appropriate hardware attached)

Unit II EXHIBITS from *Living with Others* project book

- 893 **Decorative item for the home and photo**—decorative item created by the member as part of a 4-H Home Environment Project. Include a photo showing how the item fits into the home's décor.
- 894 **Simple wood item refinished** by the 4-H member (pp. 14-15) - Item should have straight lines with no elaborate carvings or turnings. (The idea is to learn how to apply a new finish such as paint, stain, varnish, polyurethane, etc. to a simple wooden furnishing that's already in use.) Documentation is to include a "before" photo with explanation of how the item was refinished must be securely attached. Examples: refinished footstool, children's furniture, small box, tray, picture frame, bookshelves, and plant stand.
- 895 **Cloth item for the home created using a sewing machine** (Unit II, p. 12-14) – Examples: hemmed tablecloth or table runner, wall hanging, pillow, pillow case, throw, embellished towels, shower curtain, chair cover, laundry bag, pet bed, valence, and curtains. Unacceptable: purses, tote bags, backpacks, duffle bags.
- 896 **Invitation and thank you letter/note**—Design an invitation and thank you letter/note for a sleepover, birthday party or other occasion of your choice. (p. 6-7) Cards/letters may be created with computer software or handwritten. Decorations on the cards/letters may be member's original artwork, computer-generated art, purchased or found decorative items. The message written in the card or letter is more important than the decorations. Write your name and county on the back of each card/letter and place each card/letter in a plastic sheet protector. (For the fair, it is best to use a fictitious address and contact information on the invitation or thank you.)

Unit III EXHIBITS from *Where I Live* project book.

- 897 **Accessory for the home created by the 4-H member** - This exhibit is to be made up of two parts: 1) the accessory and 2) a sheet or folder of documentation. Documentation is to include: a sketch or photo to show how the accessory is used in the home and a description of how the design and colors fit in with the other furnishings and color used in the home. Examples: stitchery or appliqué wall hanging, latch hook items, pillow with applied design (stitchery, appliqué or other media), rug, picture in appropriate frame and ready to hang.
- 898 **Individual place (table) setting:** This exhibit is to be made up of two parts: 1) one individual place setting appropriate to a theme or event chosen by the 4-H member and 2) a color photo or diagram of the place setting showing how it should be arranged. (pp. 11-13) Include plate, beverage container(s), placemat, and napkin. Additional decorative item(s) are optional. All items that make up the place setting are to fit on the surface of the placemat. Flatware (knife, fork and spoon) **must** be included in the photo/diagram showing how all the items are arranged, but do NOT send flatware to the state fair. To insure that all pieces get returned to the member, write the name and county of the exhibitor on tape and place it on every part of the table setting in a location hidden to the public when exhibited at the fair.

- 899 **Piece of furniture refinished** (stripped, sanded, and painted or stained/sealed) by the 4-H member (pp. 16-20) - This exhibit is to be made up of two parts: 1) the furniture and 2) Documentation is to include a "before" photo with explanation of how the item was refinished must be securely attached. Examples: rocker, table, chair or chest.
- 900 **Old or discarded item made useful in a new way as a home accessory** (p. 20) - This exhibit is to be made up of two parts: 1) the accessory and 2) a sheet or folder of documentation. Documentation is to include a "before" photo; an explanation of how the item was made useful again in a new way; materials used, cost and time involved in project. Examples: old silverware flattened and made into wind chimes; scrap wood pieces made into wall art; old lace doily attached to a pillow or framed; old tool box cleaned up and made into a TV stand.

Unit IV EXHIBITS from *In My Home* project book

- 901 **An accessory for the home, made with member's original or adapted design** – This exhibit is to be made up of two parts: 1) the accessory and 2) a sheet or folder of documentation. Documentation is to include an explanation of how the item was created/adapted and a description of how and where item is used in the home. Examples: latch hooked rug or wall hanging; pillow with stitchery design; wall hanging of natural dyed yarns, or drawing with mat and finished or refinished frame.
- 902 **Heritage item refinished, restored, or made by the 4-H member** - This exhibit is to be made up of two parts: 1) the item and 2) a sheet or folder of documentation. Documentation is to include information on the history or meaning of the item to the member, how the item was refinished, restored, or made by the member, and how it is used in the home. Examples include antique or collectible furniture, memory box, scrapbook that reflects family history/home/house/farm/land of several generations), quilt with heritage design, wall hanging showing family tree.
- 903 **Purchased article selected by 4-H member to solve a home decorating problem** – This exhibit is to be made up of two parts: 1) the purchased article and 2) a folder of documentation. Documentation is to include a description of the problem to be solved, alternatives considered in the solution of the problem, how the plan was carried out, resources used (time, money) and member's evaluation of the results (satisfaction with purchased article, how article is used in the home), and photos illustrating the before and after effect. Examples include wall decoration, lamp, vase, storage item, desk accessories, bedspread, rug, table linens, pillow, and draperies.
- 904 **A cloth article made by the 4-H'er showing a major home improvement** – This exhibit is to be made up of two parts: 1) the cloth article and 2) a folder of documentation. Documentation is to include a written description, "before" and "after" pictures /showing how cloth article is used in home, other colors used in room, time and costs involved, and care required. Examples: bedspread, quilt, window treatment and boxed bench pad. **Unacceptable: purses, tote bags, backpacks, duffel bags.**

Unit Advanced: Self-Directed Project--the intent of the following classes is to give members an opportunity to put everything they have learned in Units I-IV of the home environment projects into practice.

- 905 **Furniture Experience**—Furniture which has been refinished, reupholstered, recovered, recycled, reused or remodeled - Exhibit is to be made up of two pieces: 1) the piece of furniture and 2) a folder describing the original condition of the furniture (include a picture if possible), work required in completing project, time and cost involved, and how item is used in the home. **DO NOT INCLUDE NEWLY CONSTRUCTED FURNITURE.**
- 906 **Design Experience** - Create a plan for or actually complete a design experience. The exhibit is to be made up of two pieces: 1) a home furnishing item which is representative of the design experience (item may be made by the member or purchased) and 2) a folder or notebook describing the plan. Examples of project ideas: a plan for redecorating a room; creation of an accessory item using an original design of 4-H member; notebook with pictures and descriptions of architectural styles used in Kentucky homes.
- 907 **Heritage Experience** - Complete a heritage project. The exhibit is to be made up of two pieces: 1) an item representative of the heritage experience and 2) a folder or notebook describing the overall experience, the significance of the project to your family. Examples of project ideas: Restoration of a family heirloom (could include caning, reseating, etc.) including who it belonged to and the significance to the family; study of furniture styles including pictures and history; study of old buildings in the community including photos and descriptions of the architectural significance, period of history, uses of the buildings; create an item after learning a heritage or craft skill...especially from an older family member or friend and describe how skill was learned, how interest was stimulated and how you will use item and skill.
- 908 **Major Home Improvement Experience** - Complete a major home improvement project. The exhibit is to be made up of a notebook which describes the project, tell whether project was an individual project or a group or family project, describe the do-it-yourself skills learned time and cost involved. Include before, during, and after photographs, if possible. Examples: improve storage areas in the house or garage; paint the house; wallpaper and decorate a room; remodel the basement.

CHANGING SPACES:

- 909 **Room Floor Plan.** This exhibit is to be made up of two parts: 1) a mounted printout of a room and 2) folder of the documentation described below. Use the Better Homes and Gardens web site www.bhg.com/decorating/arrange-a-room/ or similar software to draw a room (Scale: 1 square = 1 foot). Include a door(s), window(s), and furniture. Print in color or black and white (Minimum size 8 ½ x 11 inches. Maximum size 11 x 17 inches). Mount the printout on mat board or foam core board. Documentation should include answers to these questions: 1. Is the room you have drawn similar to a room in your house? What are its dimensions? How many square feet are in the room? 2. Did you have problems with the web site or software? If so, how did you solve them? 3. Tell about how you worked with the items in your room such as walls, windows, doors and furniture.
- 910 **House Floor Plan.** This exhibit is to be made up of two parts: 1) mounted printout of house plan and 2) folder of the documentation described below. Use any software program to draw a house plan. Include bedroom(s), bath(s), living space, kitchen, door(s) and window(s). Including a garage is optional. Print in color or black and white (Minimum size 8 ½ x 11 inches. Maximum size 11 x 17 inches.). Mount the printout on mat board or foam core board. Documentation should include answers to these questions: 1. Does your floor plan resemble the house you live in? If not, did you look at other floor plans for inspiration? What type of roof does your house have? 2. Did you consider how a family member who is disabled (for instance, a wheelchair user) might get around in your home? 3. Describe any problems you had with the software and how you solved them. Tell how you worked with additional items required to create a floor plan.
- 911 **Presentation Board – Color Scheme for One Room:** This exhibit is to be made up of two parts: 1) a presentation board as described below and 2) a folder of the documentation described below. Create a presentation board which illustrates a **color scheme** for any room in the home. On mat board or foam board, mount color pictures or actual swatches of fabric, wall covering, paint, and flooring. (Color pictures may be downloaded and printed or cut from magazines to represent these items. The mounting board should be 15" or 16" X 20" inches. In the folder, describe the person who lives in the room and the decisions required in selecting the color scheme
- 912 **Presentation Board – Floor Plan & Color Scheme for Bedroom:** This exhibit is to be made up of two parts: 1) a presentation board as described below and 2) a folder of the documentation described below. Create a presentation board which includes a **floor plan** (with placement of furniture) and **color scheme** for a bedroom. Use the Better Homes and Gardens web site www.bhg.com/decorating/arrange-a-room/ or similar software to draw the bedroom (scale: 1 square = 1 foot). Include a door(s), window(s), and furniture. Print in color or black and white. On mat or foam board, mount the floor plan and color pictures or actual swatches of fabric, wall covering, paint, and flooring. (Color pictures may be downloaded and printed or cut from magazines to represent these items.) The mounting board should be 15" or 16" X 20." In the folder, describe the person who lives in the room and the decisions required in selecting the color scheme, flooring, wall, and window treatments; describe the furniture and how the furniture was arranged to accommodate traffic flow; describe the floor, wall, and window treatments selected, etc.; and describe what you like most about the room.
- 913 **Presentation Board – Floor Plan & Color Scheme for Great Room or Family Room:** This exhibit is to be made up of two parts: 1) a presentation board as described below and 2) a folder of the documentation described below. Create a presentation board which includes a **room floor plan** (with placement of furniture) and **color scheme** for a great room/family room. Use the Better Homes and Gardens web site www.bhg.com/decorating/arrange-a-room/ or similar software to draw the room (scale: 1 square = 1 foot). Include a door(s), window(s), and furniture. Print in color or black and white. On mat or foam board, mount the floor plan and color pictures or actual swatches of fabric, wall covering, paint, and flooring. (Color pictures may be downloaded and printed or cut from magazines to represent these items.) The mounting board should be 15" or 16" X 20." In the folder, describe the family who uses the room and the decisions required in selecting the color scheme, flooring, wall, and window treatments; describe the furniture and how the furniture was arranged to accommodate traffic flow; describe the floor, wall, and window treatments selected, etc.; and describe what you like most about the room.

DIVISION 6040 - CONSUMER AND FINANCIAL EDUCATION

4-H Consumer and Financial Education exhibits will be divided into the following classes:

- a. Create poster on 20" X 30" foam core board or sturdy cardboard. Use of poster board is discouraged.
- b. The use of pencil on the front of the poster is discouraged.
- c. Judging criteria will be based on theme, poster design (lettering, attractiveness, how well it conveys a message), and narrative.
- d. Information for the following classes can be found in the 4-H Consumer Savvy project manuals—*The Consumer in Me*, *Consumer Wise*, and *Consumer Roadmap*.
- e. Posters will not be considered for class champion if they do not include the narrative or do not conform to the topics specified in the class description.

Level 1 (Grades 4-5): *The Consumer in Me*

- 914 **Poster on "Bargain Shopping"** –For grades 4-5 --Complete a cost comparison chart for one product you and your family use as outlined in the activities under "Bargain Shopping" on pp. 20-21. Use 20" X 30" foam core board or cardboard. Write a narrative telling how the decision making process was used to reach your final choice; include answers to the questions in "Check This Out!" on p. 21. At the end of the narrative, list the sources of information used in researching the topic. Make a poster on "comparison shopping." Include name, age, and county at top of narrative. The narrative can be handwritten or a computer printout; single or double spaced; on plain white or notebook paper--one page, front side only. Place the narrative in a plastic sleeve. Attach the sleeve to the back of the poster with tape.
- 915 **Poster on "What is the Best Buy?"** – For grades 4-5 Complete a cost comparison chart for two products in three different sizes as outlined in the activities on pp. 22-23. Use 20" X 30" foam core board or cardboard. Write a narrative telling how the decision making process was used to reach your final choice; include answers to the question in "Check This Out!" on p. 23. At the end of the narrative, list the sources of information used in researching the topic. Make a poster on "checking prices". Include name, age, and county at top of narrative. The narrative can be handwritten or a computer printout; single or double spaced; on plain white or notebook paper--one page, front side only. Place the narrative in a plastic sleeve. Attach the sleeve to the back of the poster with tape.

Level 2 (Grades 6-8): *Consumer Wise*

- 916 **Poster on "Media and the Marketplace"** –For grades 6-8 Complete a commercial comparison as outlined in the activities on pp. 18-19. Use 20" X 30" foam core board or cardboard. Write a narrative of your answers to the questions in "Check This Out!" on p. 19 and tell what conclusions you were able to draw from the experience. At the end of the narrative, list the sources of information you used in researching your topic. Make a poster related to "advertising aimed at young people"—Include name, age, and county at top of narrative. The narrative can be handwritten or a computer printout; single or double spaced; on plain white or notebook paper--one page, front side only. Place the narrative in a plastic sleeve. Attach the sleeve to the back of the poster with tape.
- 917 **Poster on "Decision! Decisions! Decide!"** —For grades 6-8 Complete the 6-Step Decision Making process on any item you wish to purchase as outlined in the activities on pp. 12-13. Use 20" X 30" foam core board or cardboard. Write a narrative of your answers to the questions in "Check This Out!" on p. 13 and tell what conclusions you were able to draw from the experience. At the end of the narrative, list the sources of information you used in researching your topic. Make a poster related to "the consumer decision-making process". Include name, age, and county at top of narrative. The narrative can be handwritten or a computer printout; single or double spaced; on plain white or notebook paper--one page, front side only. Place the narrative in a plastic sleeve. Attach the sleeve to the back of the poster with tape.

Level 3 (Grades 9-12): *Consumer Roadmap*

- 918 **Poster on "How to Write a Wrong"** –For grades 9-12 Write a complaint letter as outlined in the activities on pp 22-23. Use 20" X 30" foam core board or cardboard. Write a narrative of your answers to the questions in "Check This Out!" on p. 23 and tell what conclusions you were able to draw from the experience. At the end of the narrative, list the sources of information you used in researching your topic. Make a poster related to "resolving a consumer complaint". Include name, age, and county at top of narrative. The narrative can be handwritten or a computer printout; single or double spaced; on plain white or notebook paper--one page, front side only. Place the narrative in a plastic sleeve. Attach the sleeve to the back of the poster with tape.
- 919 **Poster on "I Own a Car or Does It Own Me?"** –For grades 9-12 Calculate and illustrate the costs of owning a car as outlined in the activities on pp. 28-31. Use 20" X 30" foam core board or cardboard. Write a narrative of your answers to the questions in "Check This Out!" on pp. 29-30 and tell what conclusions you were able to draw from the experience. At the end of the narrative, list the sources of information you used in researching your topic. Make a poster related to "consumer decision-making in buying a car." Include name, age, and county at top of narrative. The narrative can be handwritten or a computer printout; single or double spaced; on plain white or notebook paper--one page, front side only. Place the narrative in a plastic sleeve. Attach the sleeve to the back of the poster with tape.
- 920 **Poster on "What Does Real Life Cost?"** –For grades 9-12 Identify and illustrate the true costs of living on your own as outlined in the activities on pp. 32-33. Use 20" X 30" foam core board or cardboard. Write a narrative of your answers to the questions in "Check This Out!" on p. 33 and tell what conclusions you were able to draw from the experience. At the end of the narrative, list the sources of information you used in researching your topic. Make a poster related to "the financial responsibilities of living on your own. Include name, age, and county at top of narrative. The narrative can be handwritten or a computer printout; single or double spaced; on plain white or notebook paper--one page, front side only. Place the narrative in a plastic sleeve. Attach the sleeve to the back of the poster with tape.

DIVISION 6041 – 4-H LEADERSHIP & COMMUNICATIONS PROJECT

4-H Leadership Project exhibits will be divided into the following classes:

1. Exhibits MUST correspond to:
 - a. Any project or activity from the Leadership (4-H Step Up to Leadership and Unlock Your Leadership Potential) and/or Communications (4-H Building Bridges) project books.
 - b. Only pages relevant to project are needed. Additional pages are allowed but will not be considered by the judges.
 - c. The 4-H ID card (4LO-11SO) should be securely attached to the outside lower right corner of the outside cover. Inside, clearly indicate the pages that are to be judged. If the pages to be judged are not clearly marked then the last 2-4 pages of the book will be reviewed.
 - d. THIS IS NOT A GENERAL SCRAPBOOKING CATEGORY. (For scrapbooking, see 6029, class 745/746) The scrapbook format is a method of recording the Leadership and/or Communications experiences of youth who participate in these project areas. State Fair projects that do not demonstrate a clearly stated correspondence to a Leadership or Communications activity will not be considered for judging or will receive a white ribbon.
2. An exhibitor is limited to one set of record pages in each division for a total of three (3) entries.
3. Exhibit must be in an 8 ½" x 11" or 12" x 12" notebook or scrapbook format. Format will allow a Leadership or Communication Portfolio to be developed and kept over multiple years.
4. Refer to the class entry to determine the required number of pages.
5. Photos should clearly address the theme or activity corresponding to the selected leadership project or communication project. Each photo should be explained with a 2-3 sentence journaling caption. One or two paragraphs of narrative explaining the project or activity should be included on the scrapbook pages. Clearly indicate pages to be judged. Additional pages beyond those required by the project will not be reviewed.
6. The Leadership and/or Communications Project should contain the following:
 - a. 2 or more photos on each page;
 - b. Each photo should be explained with captions (see #9);
 - c. 1-2 paragraphs of narrative (see #9) on one of the pages;
 - d. No additional pages of narrative are needed
7. Photos can be taken by the 4-Her or another person. The pictures should clearly address the Leadership or Communication project that is selected. Pictures may be cropped as desired.
8. Pages will be scored on: organization of project (easy to follow and relevant to a Leadership and/or Communications Project), neatness, narrative content, caption content, photo content, and overall effectiveness of the project.

DIVISION 6041-A 4-H COMMUNICATION PROJECT:

- 925 Junior Division: Communication Scrapbook Display – two (2) page display of work completed by junior level member based on an activity, program or project from the 4-H Communications Curriculum.
- 926 Senior Division: Communication Scrapbook Display –, four (4) page display of work completed by senior level member based on an activity, program or project from the 4-H Communications Curriculum.
- 927 Senior Division: Resume – one page resume using Microsoft Word. See 4-H Communications project book "The Perfect Fit" and "Take Me As I Am" for resume tips and guidelines.

DIVISION 6041-B 4-H LEADERSHIP PROJECT

- 928 Junior Level 2 pages based on an activity, program or project from the 4-H Leadership Curriculum.
- 929 Senior Level 4 pages based on an activity, program or project from the 4-H Leadership Curriculum.

DIVISION 6041-C Secretary Scrapbook (Ribbon Only, No Premium)

- 930 4-H Club Scrapbook – Using pictures and captions tell about your 4-H Clubs year focusing on leadership, communications and community service activities. (No limit on page numbers)

DIVISION 6042 – KENTUCKY 4-H TRENDS

1. Each exhibit must be properly labeled. Place ID tag (4LO-11SO) in the most visible place on the exhibit, preferably on the lower right-hand corner. Labels may be securely taped, attached with a rubber band through a hole in the corner or safety pinned (fabric items). To insure that all parts of the exhibit make it back to the county, "hide" a small label (with a minimum of the county name) on EVERY parts that might become separated from others; these should not be visible to the public when displayed.
2. All photography classes with one photograph must be mounted on 10"x 16" MAT BOARD-(no poster board or foam core board accepted). Single photographs are limited to up to a maximum size of 8"x 12".
3. Each picture must be mounted securely. Rubber cement or dry mounting tissue is recommended. Do not use photo mounting corners.
5. All photographic entries are required to have sticky-back Velcro ("hook" Velcro only) in each of the four corners on the back of the mat board for easier exhibiting. The "loop"/smooth Velcro is not necessary and leaving it off will minimize hanging preparation time by judges.
4. All entries must follow the specifications and rules listed in their class in order to be named champion.
5. Junior division includes ages 9-13; Senior division includes ages 14-18.

Clover Photography

1. Exhibit is limited to a single photograph.
2. Subject of photograph must include 4-leaf clover. (Photographs of 3-leaf clovers will NOT be accepted.)
3. 4-leaf clover may be real or created.
4. Photograph may be color or black and white.
5. Follow all mounting rules described in the Cloverville Photography division.
6. Maximum photograph size 8" X 12".
7. The 4-H identification tag should be located in the bottom right hand corner.

1010 Junior Clover Photograph

1011 Senior Clover Photograph

Duct Tape Project

Any project, fashion, crafts or anything else made using duct tape. This project must be made of at least 90% duct tape. Items will be judged on creativity, design, quality, and use. For example a purse with matching wallet all constructed of duct tape. Entries are limited to one entry per class per county.

1020 Junior Duct Tape Project

1021 Senior Duct Tape Project.

Recording History

1. Judging criteria will be based on implementation of the 4-H theme. 4-H historical content, poster design, (lettering, attractiveness, how well it conveys the message.) As well as the effectiveness of the poster to promote 4-H.
2. Exhibit must be completed on a standard full size foam core board.
3. Posters may not include items or embellishments that make the poster 3-dimensional.
4. Any use of the 4-H Clover must adhere to the standards and guidelines of the registered 4-H clover.
5. Any color foam core board is acceptable.

1040 Junior Historical Poster

1041 Senior Historical Poster

Upcycling Project

Upcycling is taking something that you are throwing away and making it into something that maintains or improves the quality of the materials. Example: There are coin purses made from sweaters, earrings cut out of vinyl records and an old travel case made into a clock. The designs will be judged on quality, use, and creativity. Entries are limited to one entry per class per county.

1050 Junior Upcycling Project

1051 Senior Upcycling Project

4-H Cake Decorating

1. Entry consists of a decorated (Styrofoam) cake.
2. Styrofoam MUST be the base for the decorating. Real cakes will NOT be accepted.
3. Judging is based on decoration only not taste.
4. Exhibit is not limited to a color or design.
5. Refrigeration will NOT be provided.
6. Exhibit must be limited in size to no taller than 24" and no more than ½ sheet board.

7. Cakes may be returned, based on the condition at the end of the fair.
8. 4-H identification cards must be attached to bottom right hand corner of sheet board.

- 1060 Junior 4-H Cake Decorating (Cake must include the 4-H Clover either in design or decoration)
- 1061 Senior 4-H Cake Decorating (Cake must include the 4-H Clover either in design or decoration)
- 1062 Junior General Cake Decorating
- 1063 Senior General Cake Decorating

Cup Cakes

1. Entry consists of a decorated (Styrofoam) cake.
2. Styrofoam MUST be the base for the decorating. Real cakes will NOT be accepted.
3. Judging is based on decoration only not taste.
4. Exhibit is not limited to a color or design.
5. Refrigeration will NOT be provided.
6. Exhibit must be limited to two cupcakes.
7. Cakes may be returned based on condition at the end of the fair.
8. 4-H identification cards must be attached to bottom right hand corner of sheet board.

- 1070 Junior 4-H Cup Cake Decorating
- 1071 Senior 4-H Cup Cake Decorating
- 1072 Junior General 4-H Cup Cake Decorating
- 1073 Senior General Cup Cake Decorating

4-H Horse Craft

Anything pertaining to horses that the 4-H'ers make themselves such as painting, lead ropes, blankets, bridles, riding apparel, equipment, etc. This is a Nelson County Project only. Champions are not eligible for the Kentucky State Fair.

4-H Means Business

Members of 4-H Means Business Club are encouraged to submit their business plan and/or tri-fold display. This is a Nelson County Project only. Champions are not eligible for the Kentucky State Fair.